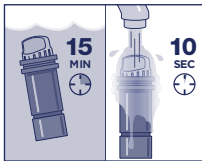


# Quick Start Guide

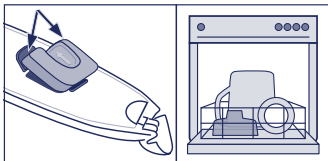
Models PPT710X<sup>1</sup>, PPT110X<sup>1</sup>, CR110X<sup>1</sup> | <sup>1</sup>X= color: C, Z, W, B, M

1



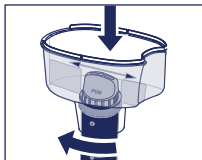
**Soak** filter for 15 minutes, then **rinse** for 10 seconds.

2



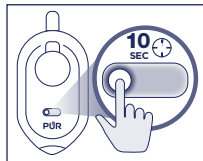
**Remove** filter light from underside of lid before **washing**.

3



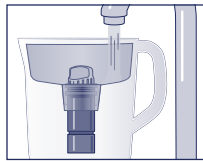
**Install** filter then **twist** and **lock** to align.

4



**Hold** reset button for 10 seconds until it blinks **green**.

5



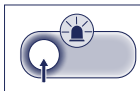
**Fill** reservoir with cool tap water and **enjoy!**

For detailed instructions / Para instrucciones en español: [PUR.com/Support](https://www.pur.com/Support)

**Helen  
of Troy**

© 2023 All rights reserved.  
Distributed by Kaz USA, Inc., a Helen of Troy Company,  
400 Donald Lynch Blvd, Marlborough, MA 01752.  
PUR® is a trademark of Helen of Troy Limited.

**Filter Light**  
flashes **green**  
with every pour.



Replace filter when  
light flashes **red**.



Reset after every  
**filter change.**



Filter will last  
up to **2 months.**

This PUR Pitcher is not intended to purify water.  
**Do Not** use with water that is microbiologically unsafe  
or of unknown quality without adequate disinfection  
before or after the system. PUR does not filter microbes.

For Warranty, Filters, Help & More: [PUR.com](http://PUR.com) | 1-800-PUR-LINE (800-787-5463)



## PUR Replacement Filters



**PUR PLUS  
CRF-950Z**  
(Included with  
system.)



**PUR PPF900Z™**  
(Certified with  
system, sold  
separately.)

**Filter Capacity:** 40 gallons  
(151 liters), up to 2 months  
**Max Water Temp:** 82°F (28°C)  
**Min Water Temp:** 34°F (2°C)

## Independently Certified



System Tested and Certified by WQA against NSF/ANSI Standards 42, 53 and 401 for the reduction of the claims specified on the Performance Data Sheet.



System Tested and Certified by NSF International against NSF/ANSI Standards 42, 53 and 401 for the reduction of the claims specified on the Performance Data Sheet.



Effective water filter that does not remove fluoride from water.

Visit [PUR.com/PDS](http://PUR.com/PDS) for performance data sheet and filter replacement information.

NSF/ANSI Standard 401 has been deemed as "incidental contaminants/emerging compounds." Incidental contaminants are those compounds that have been detected in drinking water supplies at trace levels. While occurring at only trace levels, these compounds can affect the public acceptance/perception of drinking water quality.