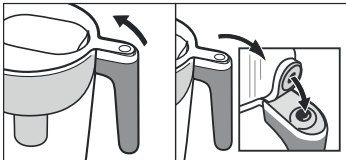


# Quick Start Guide

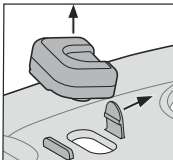
Model PPT120W

1



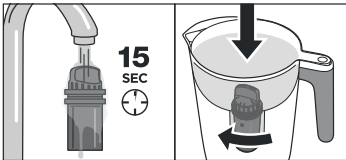
**Lift tab** to unlock & remove lid. To replace, **lock tab** in place.

2



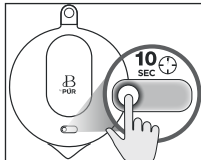
**Remove** filter light from underside of lid before **washing**. **Pull back** on tab and **lift** to remove light. **Replace** before **using**.

3



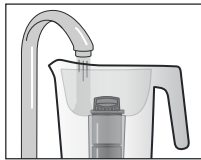
**Rinse** filter for 15 seconds. **Install** filter then **twist** and **lock** to align.

4



**Hold** reset button for 10 seconds until it **blinks green**.

5



**Fill** reservoir with cool tap water and **enjoy!**

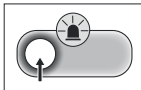
**Tip:** Our modern, semi-translucent finish is an elegant upgrade from a traditional pitcher. Unlike clear pitchers, the best way to view the water level is from the side or through the fill door.

For detailed instructions / Para instrucciones en español: [PUR.com/Support](http://PUR.com/Support)

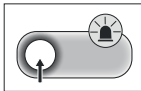
**For Warranty, Filters, Help & More:**  
[PUR.com](http://PUR.com) | 1-800-PUR-LINE (800-787-5463)

# Beautiful™ by PUR

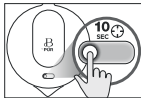
Filter light flashes **green** with every pour.



Replace filter when light flashes **red**.



Reset light after every **filter change**.



Filter will last up to **2 months**.

**See set up instructions on reverse.**

This Beautiful™ by PUR Pitcher is not intended to purify water. **Do not** use with water that is microbiologically unsafe or of unknown quality without adequate disinfection before or after the system. PUR does not filter microbes.

PUR® is a trademark of Helen of Troy Limited. BEAUTIFUL™ is a trademark of Beautiful Brands LLC, a Made by Gather company, under license to Kaz USA, Inc. [www.beautifulbydrew.com](http://www.beautifulbydrew.com)



## Be Sure to Use PUR Replacement Filters

All PUR filters fit in all Beautiful™ by PUR Pitchers



**PUR PPF900Z™**  
(Included with system.)



**PUR PLUS CRF-950Z**  
(Certified with system, sold separately.)

### Filter Capacity:

40 gallons (151 liters), up to 2 months

**Max Water Temp:** 82°F (28°C)

**Min Water Temp:** 34°F (2°C)

## Independently Certified



System Tested and Certified by WQA against NSF/ANSI Standards 42, 53 and 401 for the reduction of the claims specified on the Performance Data Sheet.



System Tested and Certified by NSF International against NSF/ANSI Standards 42, 53 and 401 for the reduction of the claims specified on the Performance Data Sheet.



Effective water filter that does not remove fluoride from water.

Visit [PUR.com/PDS](http://PUR.com/PDS) for performance data sheet and filter replacement information.

NSF/ANSI Standard 401 has been deemed as "incidental contaminants/emerging compounds." Incidental contaminants are those compounds that have been detected in drinking water supplies at trace levels. While occurring at only trace levels, these compounds can affect the public acceptance/perception of drinking water quality.



© 2023, All rights reserved. Distributed by Kaz USA, Inc., a Helen of Troy Company, 400 Donald Lynch Blvd, Marlborough, MA 01752.